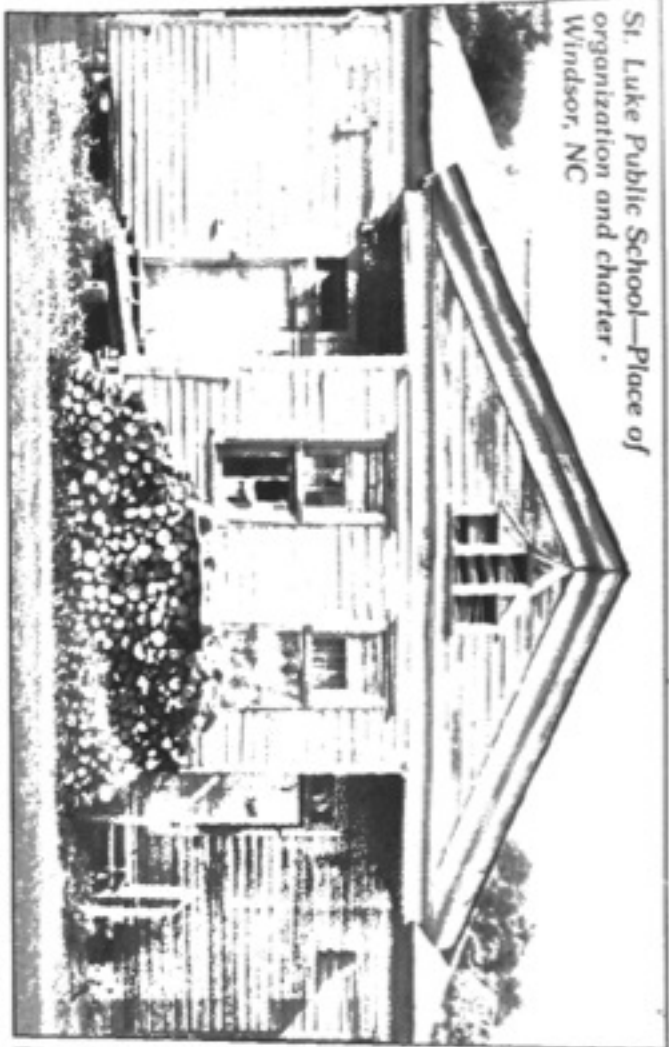
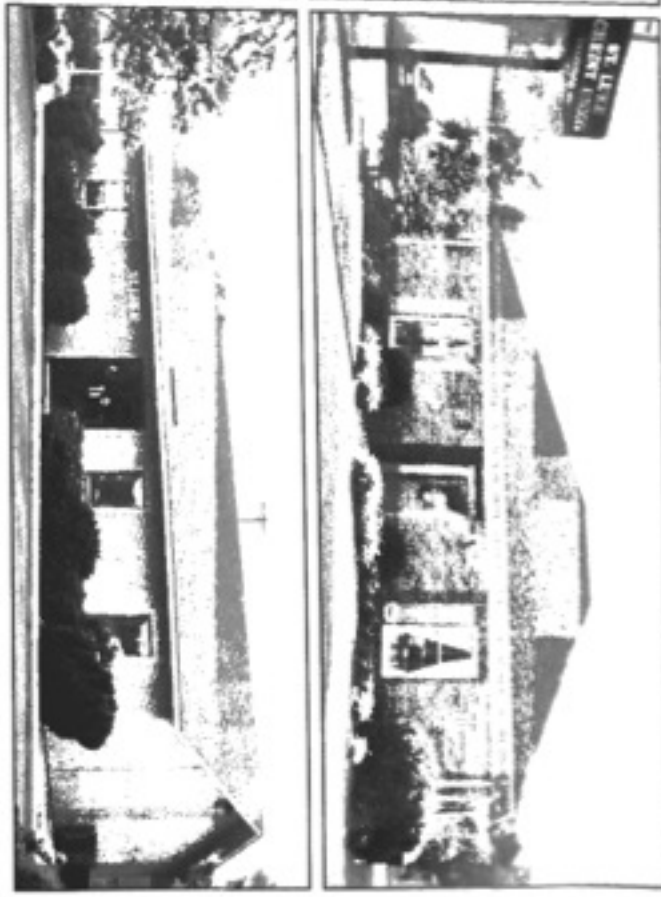


St. Luke Public School—Place of organization and charter. Windsor, NC



ST. LUKE CREDIT UNION



In the Spring of 1943, a group of community leaders sat around a pot belly stove in a two room school known as St. Luke Elementary School discussing the economic status of black farmers in Bertie County who could not secure a loan for farming purposes.

These gentlemen, James T. Mountain, Sr., principal of the school; Herbert King, a merchant; Martin Clemmons, farmer and logger; William Martin Cooper and the Rev. George Webb, both farmers, collectively realized that they could pool their monies, and loan to each other. This was the birth of the St. Luke Savings Club.

With these ideas, others in the St. Luke community became interested and joined the club.

After the establishment of the club, which included the support of the community, the need for a charter was evident.

In June 1944, under laws governing State Chartered Credit Union, a charter was applied for and granted in the name of St. Luke Credit Union. In 1959, with \$59,000.00 in assets and 400 members, the board of directors decided to move into the Town of Windsor. A building on Granville Street was rented for \$150.00 per year. New board members were recruited in order to bring in new ideas.

Mr. James T. Mountain, Sr.; Mr. James L. Gilliam; Mrs. Amaza Mitchell Byrd and other board members volunteered their services to the business of running the Credit Union. With the increase of business, the need for

a full time person was evident, and in 1966, Mrs. Amaza Mitchell Byrd became the first full time clerk of St. Luke Credit Union.

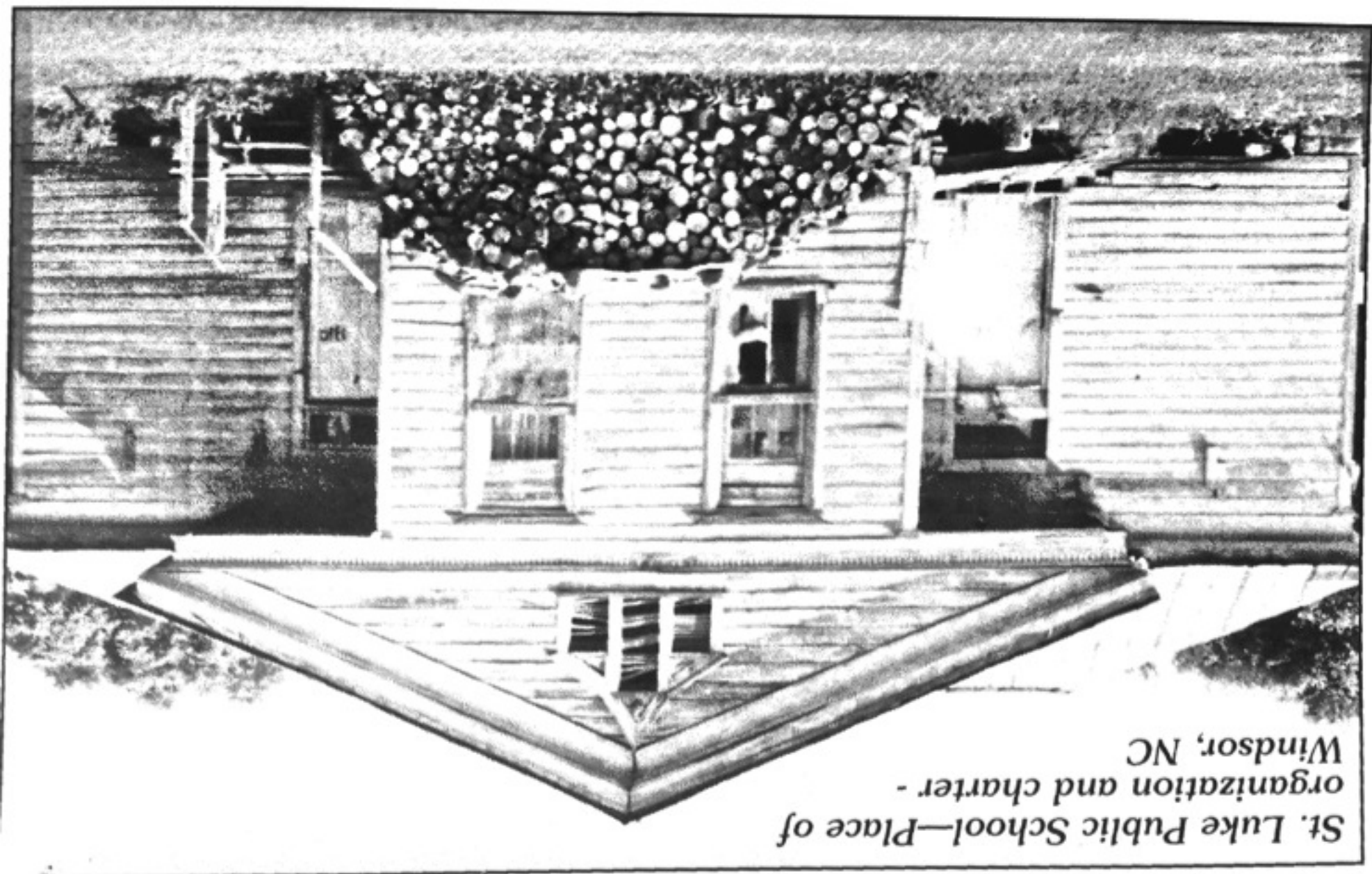
During this time, Mr. James L. Gilliam continued to serve as Sec.-Treas.-Mgr. on a volunteer basis; and Mr. James T. Mountain, Sr. served as Loan Officer-Mgr., who also volunteered his time and services.

The field of membership was expanded to include anyone who lived or worked within 25 miles of the Credit Union Office.

After the closing of Martin County Federal Credit Union, some former members of Martin County Federal Credit Union requested St. Luke to expand our services to Martin County. After many requests, St. Luke applied for permission to purchase the Martin County Federal Credit Union building from the National Credit Union Administration, and it was granted.

In 1986, the office was opened in Williamston at 308 S. Pearl St. The community development philosophy of St. Luke Credit Union, loaning money for provident and productive purposes in order to improve the quality of members lives, has resulted in significant progress throughout Bertie and Martin Counties over the years.

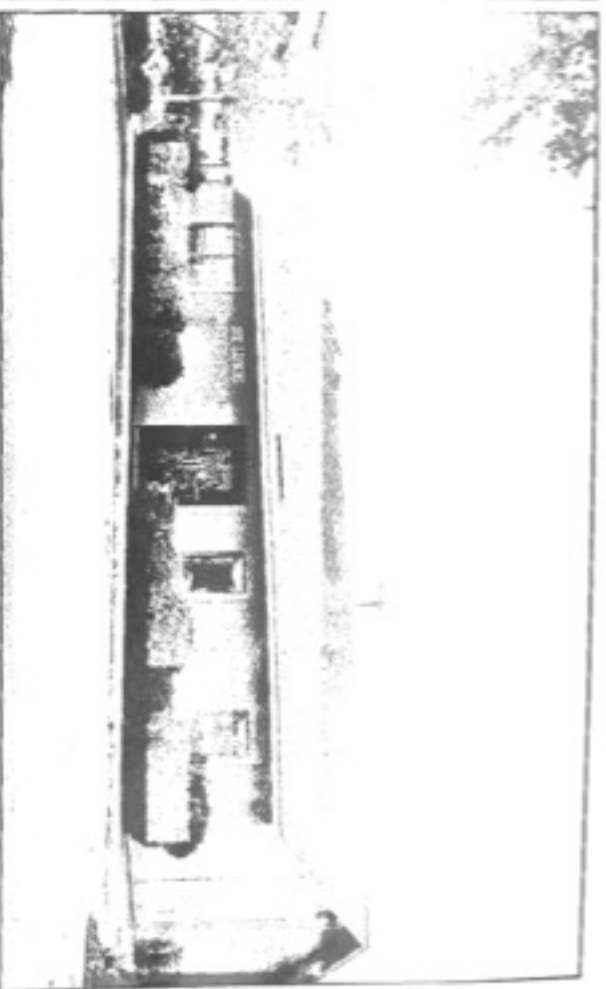
As the Credit Union continued to prosper and the North Carolina Credit Union Division recognized the soundness and fiduciary responsibility of management and board, two twentieth century facilities were purchased to better serve the growing membership.



St. Luke Public School—Place of
organization and charter -
Windsor, NC

WV 2

43



ST. LUKE CREDIT UNION

302 W. Granville St. • Windsor, NC 27983
(252) 794-3242 (252) 794-4206 Fax

ST. LUKE CREDIT UNION

210 W. Boulevard • Williamston, NC 27892
(252) 792-1899 (252) 792-0712 Fax

