
Health Implications and Health Care Challenges Associated with Prostitution

Cathie Ingram Fogel, PhD, RNC, FAAN
Professor & Coordinator, Women's Health
University of North Carolina School of Nursing

Session Objectives

This session will focus on:

- The health problems and concerns of women prostitutes.
- Women prisoners-an example
- Recommendations for health care services

Health Problems

- Violence and Abuse
- Substance Abuse
- Mental Health Problems
- Infections
- Survival Needs & Health Care

Violence and Abuse

- Violence is a hallmark of past and current lives
- Threat and reality of violence are common and constant
- Majority have a history of childhood abuse, especially sexual abuse



Substance Abuse

- Alcohol and drug addiction
 - Marijuana
 - Cocaine
 - Crack
 - Heroin
 - Methamphetamine



Mental Health Problems

- Stigma
- Depression
- PTSD
- Dissociation



Infections

- STDs & HIV/AIDS
 - Gonorrhea
 - Syphilis
 - Chlamydia
 - Herpes
 - HPV
 - Hepatitis
- Other infections
 - Tuberculosis
 - Pneumonia
 - Scabies
- Drug-resistant



HIV Risk Factors



- Sex work
- Substance Abuse
- Depression, dissociation
- Interrelationship of physical, emotional & sexual abuse; drug use; and multiple partners + women's perceptions of self

Other Health Problems

- Injuries: fractures, burns
- Gynecological
- Obstetrical
- Cardiac
- Chronic liver disease
- Excess mortality
- Other



Survival Needs

- Shelter
- Safety
- Economic stability
- Adequate health care



Women in Prison



Women in Prison

- Over 95,000 women currently in United States federal and state prisons
- Short sentences & recidivism = lots of movement between prison and home
- Poor, uneducated, unskilled with sporadic employment histories



Women in Prison

- Disproportionately women of color
- Childbearing age and mothers of children (85%)
- Chronically chaotic lives



Women in Prison

- Experienced abuse—physical, emotional, sexual (~75%)
- Numerous STD/HIV risk factors
- Depression, PTSD, anxiety



WCRR Intervention

INFLUENCING FACTORS

Depression
Violence
Relationships
Social Support
Substance Abuse

LABELING BEHAVIOR

HIV/STD Knowledge
Risk Perception

COMMITTING to CHANGE

Protective Practices
Attitudes
Prioritizing

Enactment Skills

Communication & Negotiation
Technical Skills

INFLUENCING FACTORS

Depression
Violence
Relationships
Social Support
Drugs & ETOH

PROTECTIVE PRACTICES

Unprotected sex
More condoms
use
Fewer partners

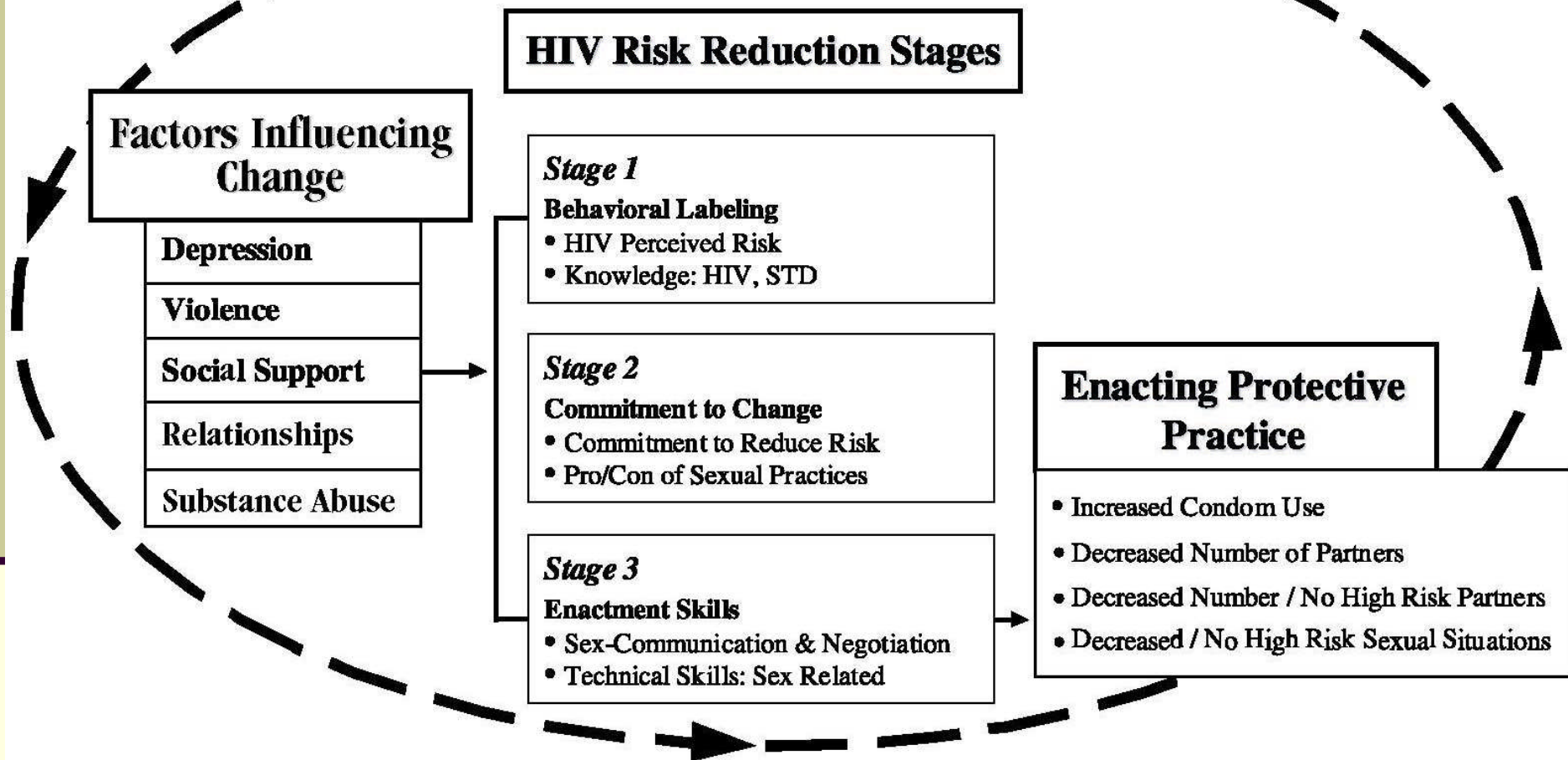
Experimental Design

- 3-Group randomized control design to compare the WCRRI with
 - NIDA Standard Intervention for HIV Prevention
 - Proven standard HIV prevention intervention with focus on IV drug use
 - Stay Fit and Health Intervention
 - replicate the number and duration of contacts and health-related content of the WCRRI
 - Central theme: developing & maintaining healthy lifestyle habits for life

Experimental Design

- Total Sample Size = 324 women (108 in each group); recruited in cohorts
- In prison: Baseline interview (T1), Intervention, T2 interview, Pre-release session
- In community: Booster phone calls (WCRRI & Stay Fit)
 - 1-month out T3 interview
 - 3-months out T4 interview
 - 6-months out T5 interview
 - 9 months out T6 interview

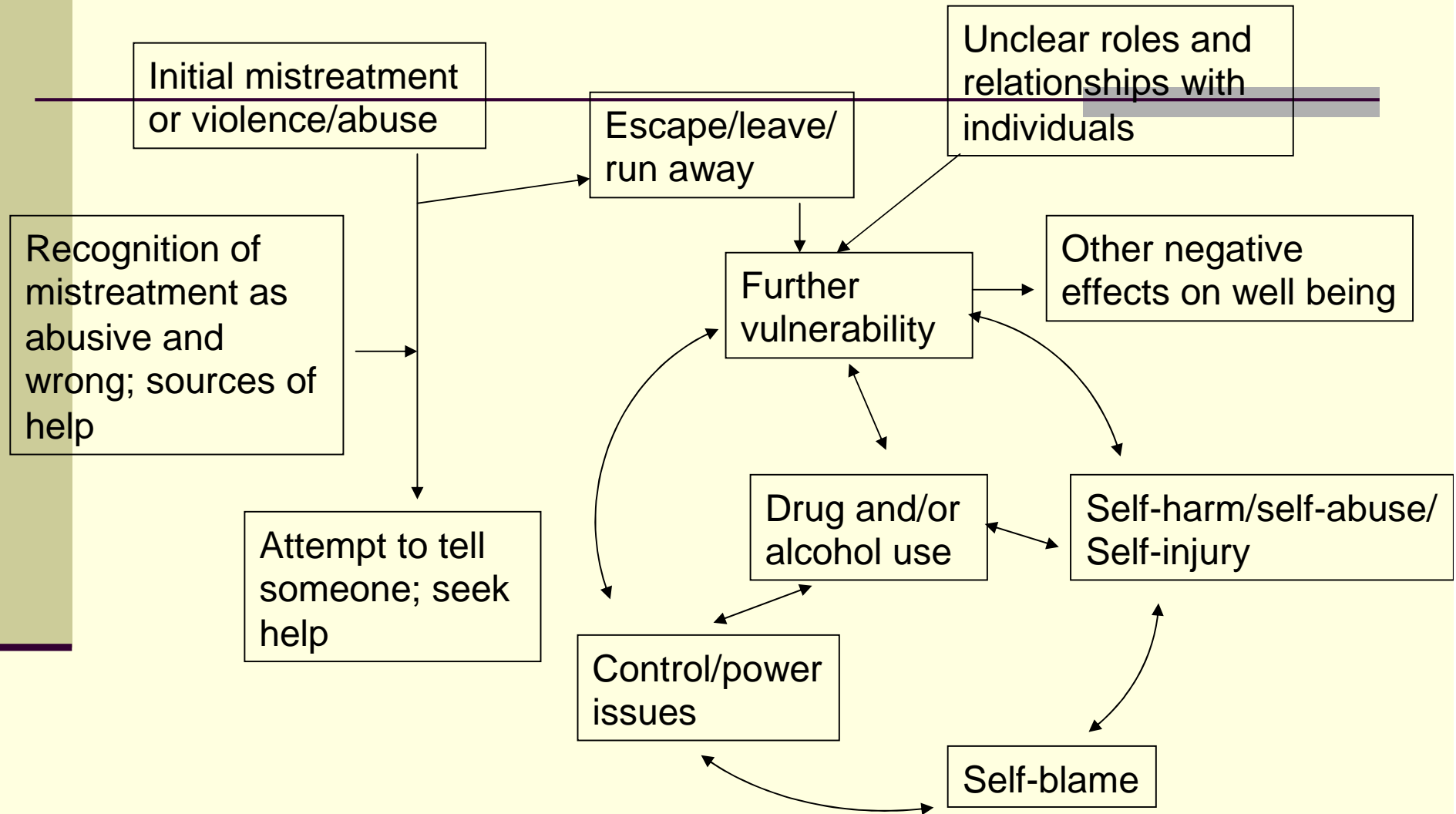
Empowerment



Violence Experiences in HOPE Women

	No SE	SE
Feel unsafe	56.7%	75.7%
Husband	35.7%	29%
Stranger	8.8%	18.7
Forced sex	35.3	63.2

Confluence of Events and Factors Contributing to Victimization

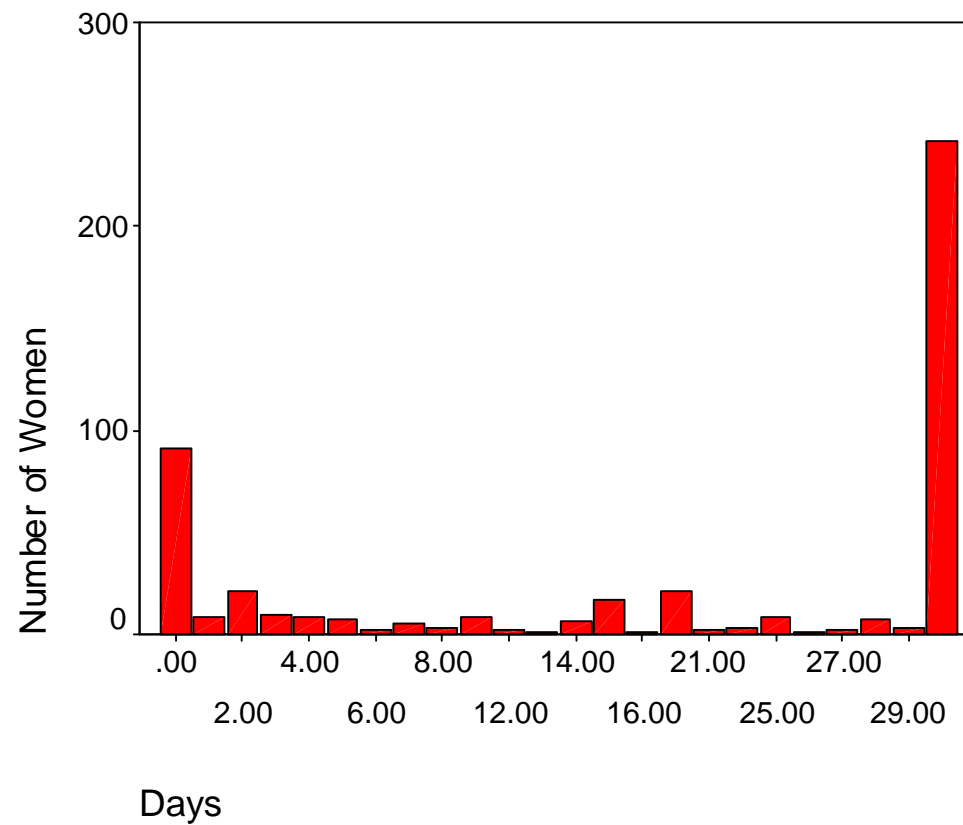


Substance Abuse

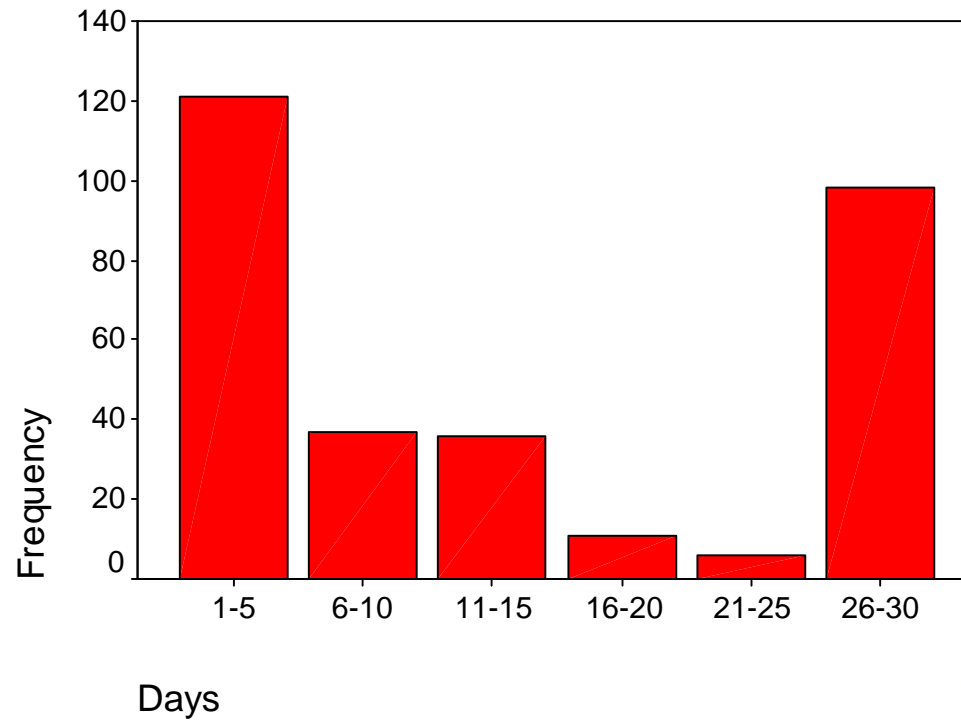
- Early age at initiation of use-trend toward earlier use by SE subjects
- First drug ever used:
 - Alcohol & Marijuana
- Most commonly used drugs in month prior to incarceration:
 - Alcohol, Marijuana, Crack



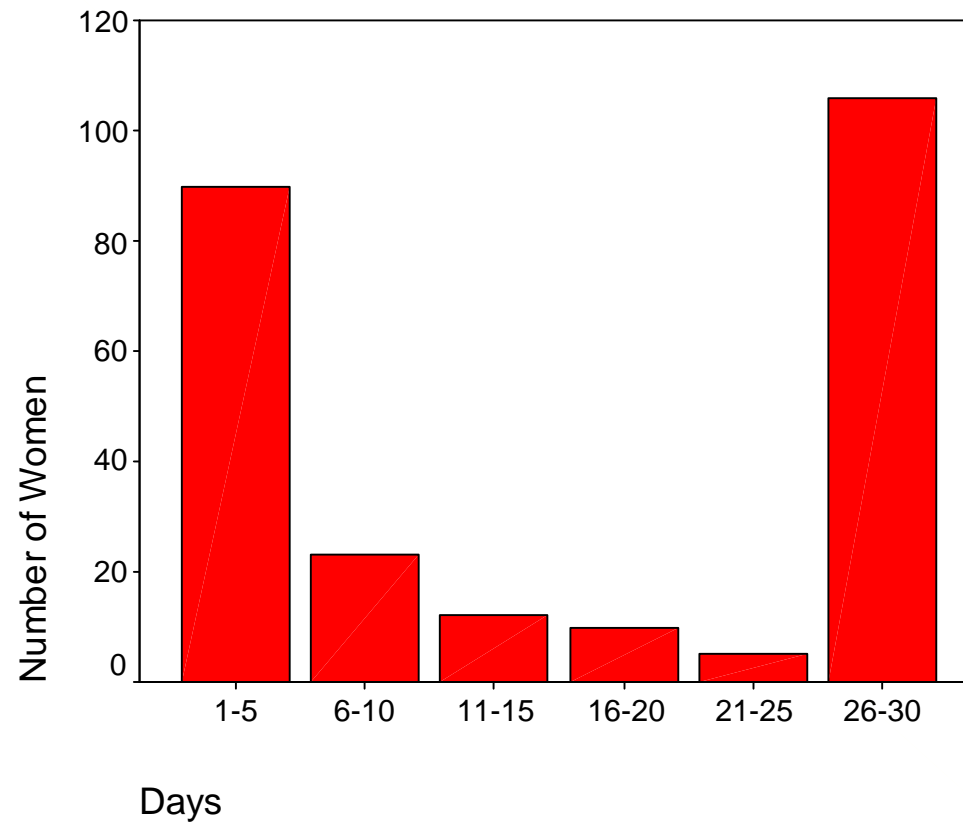
Total Drug Use in Month prior Incarceration



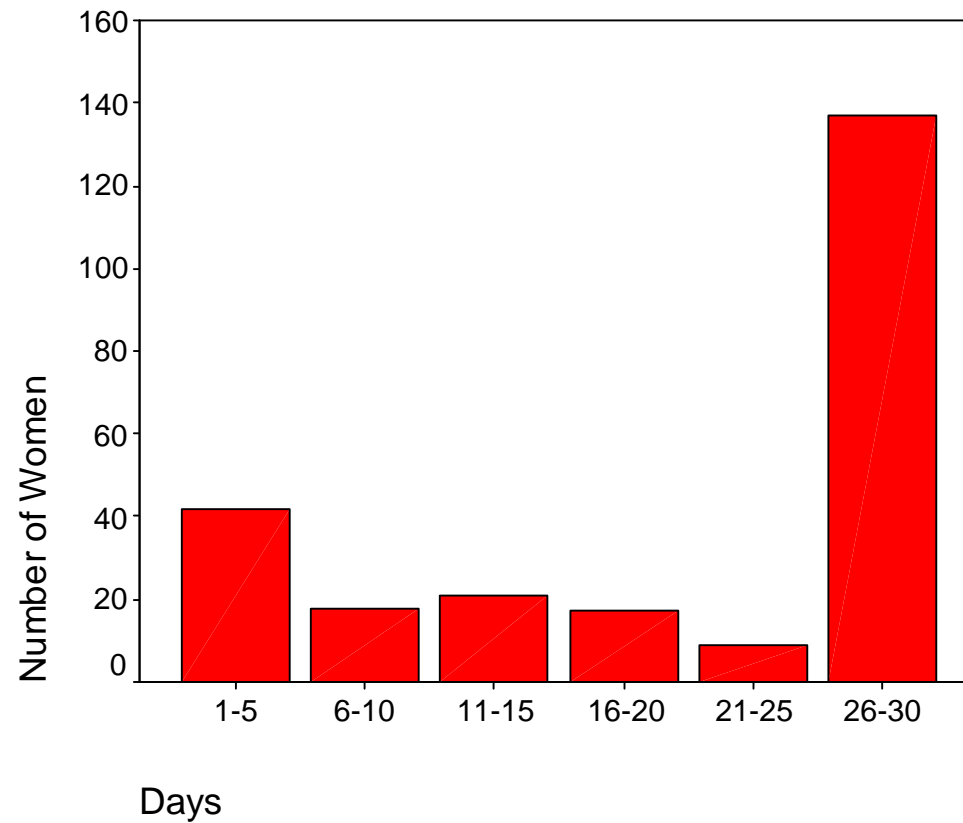
Alcohol Use in Month prior Incarceration



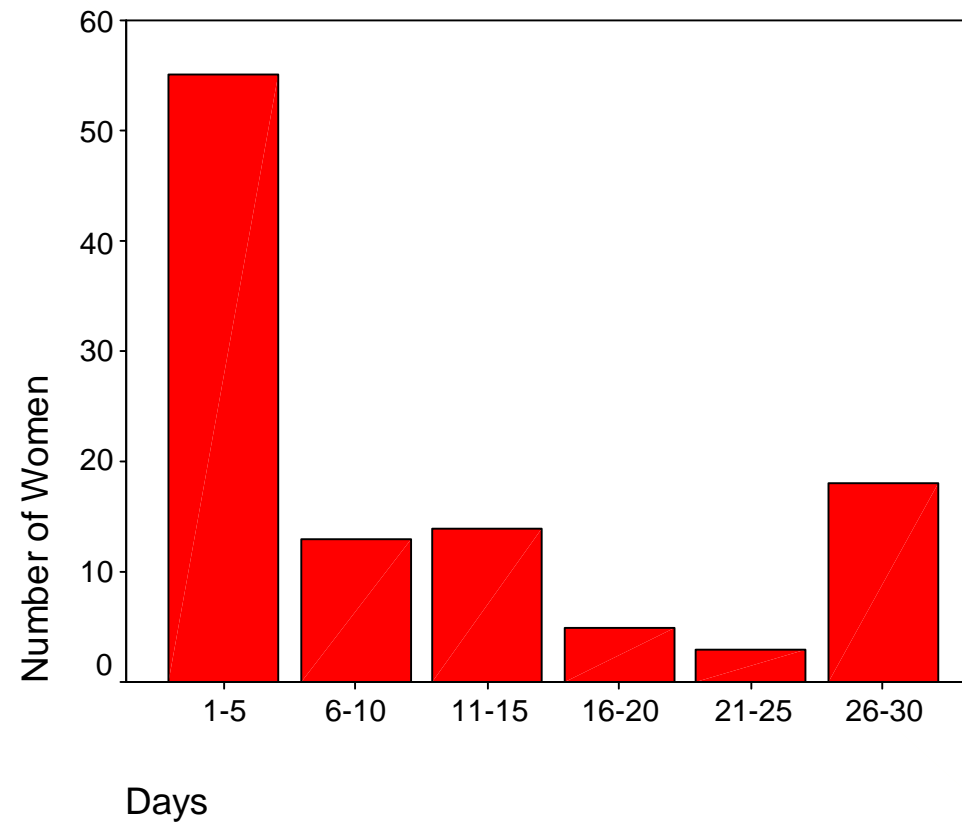
Marijuana Use in Month prior Incarceration



Crack Use in Month prior Incarceration



Use in Month prior Incarceration



Mental Health Problems

- Depression
- Dissociation
- Sadness, low self-esteem
- Hopelessness



Infections

	NSE	SE
Gonorrhoea	13.5%	41.3%
Trichomoniasis	15.6%	39.1%
Chlamydia	21.8%	35.2%
Syphilis	3.7%	17.4%
HCV	5.3%	13.0%
HPV	3.8%	8.3%

Additional Health Problems

- Common Self-Reported Conditions
 - Asthma, Bronchitis, Sinusitis
 - Back pain
 - Hypertension & other cardiac conditions
 - Diabetes
 - Arthritis
 - Headaches-fractures, head injuries
 - Seizures
 - Traumatic injuries

Challenges for Health Care Providers and Services

- Address health care within the context of women's lives
- Know your patient
- Available & accessible services
 - Primary Care
 - OB-Prenatal care



Health Care Challenges

- Gender-based substance abuse treatment
- Reduction of dependence on survival sex